

ANDERS ELEVATOR

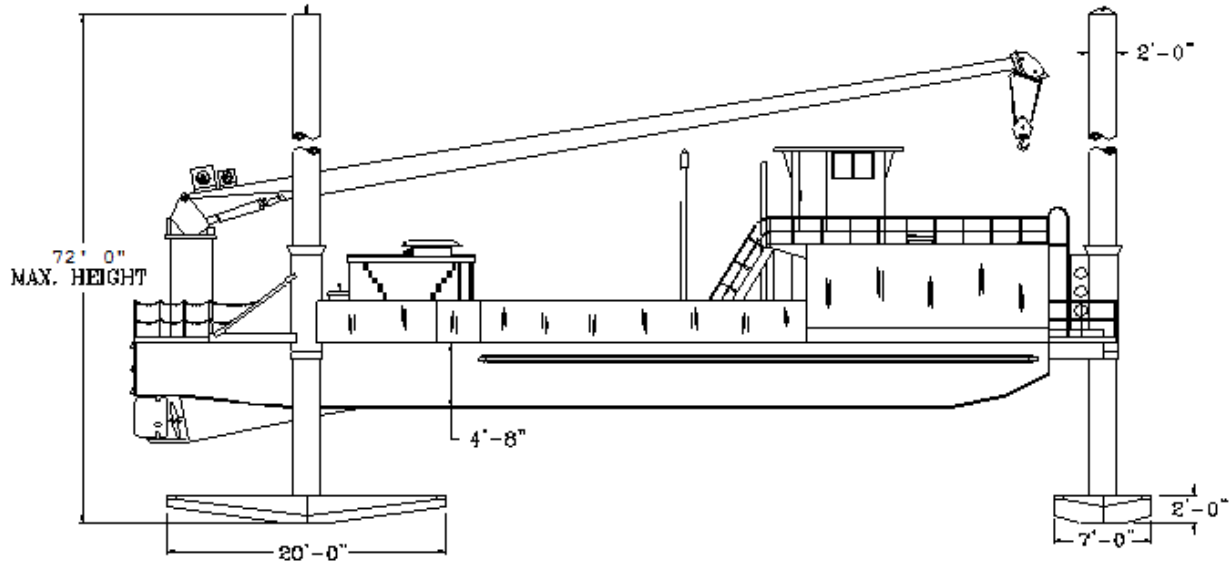


The Anders Elevator liftboat is designed to facilitate general requirements of marine construction, bridge fender and oil field work including, but not limited to, platform construction and maintenance, flow line construction, well maintenance, field production maintenance, seismic drilling and recording, surveying, jetting, plug and abandonment support, diving operations, underwater construction, underwater demolition and equipment movement and lifting. With the cabin on the bow, this liftboat provides the distinct advantage of protecting equipment placed on the deck from saltwater spray. This liftboat is USCG inspected and certified. The Anders Elevator is available for charter.

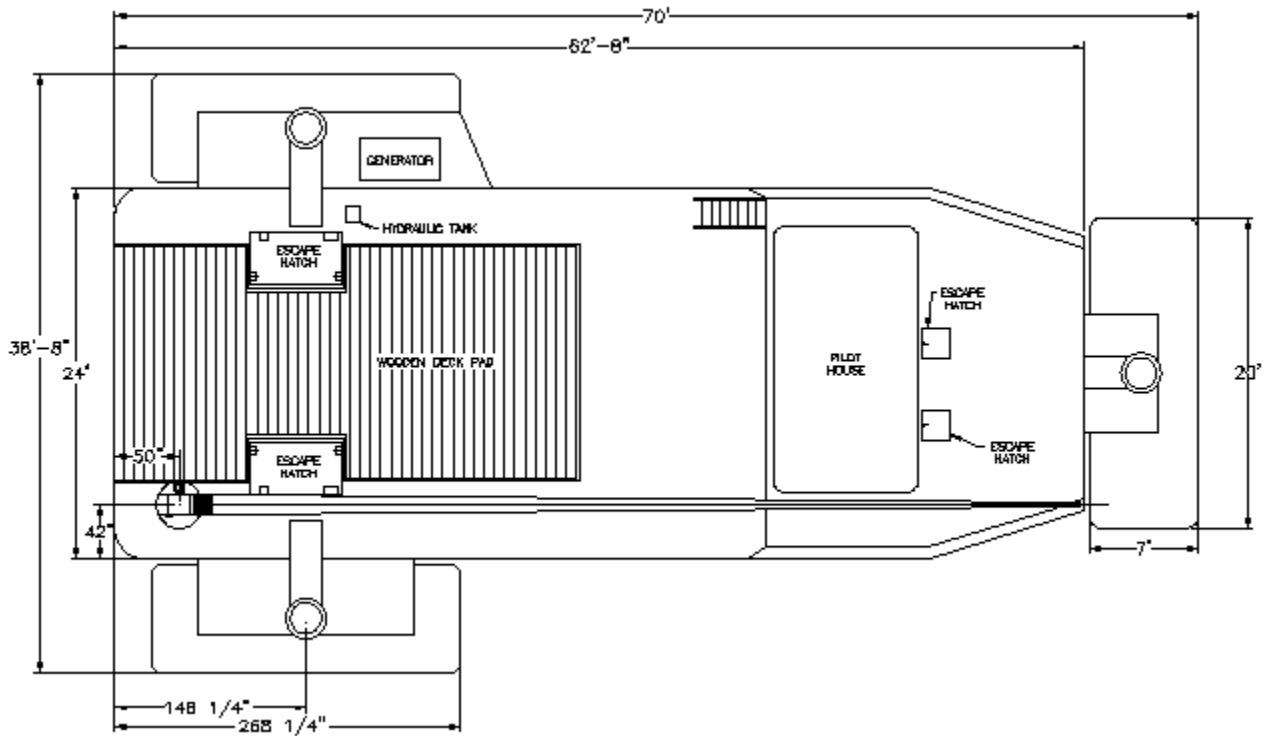
We pride ourselves on accommodating our customers and completing their project safely while treating their money and equipment as if it were our own. We are available 24 hours per day to discuss and support any needs you may have.

John Anders is available at your convenience via cellular phone at (504) 324-2395.

Side View

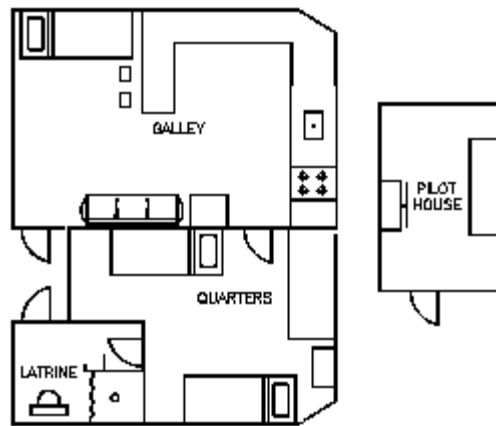


Cabin and Deck Layout



CABIN LAYOUT

Quarters and galley have air conditioning and heating.
 Galley is equipped to cater.



DIMENSIONS:

Length of hull(feet) - 65'
 Beam of hull(feet) - 24'
 Depth of hull(feet) - 4' 6"
 Length overall(feet) - 73'
 Beam overall(feet) - 39'
 Draft(feet) - 4'
 Open deck area(approx. sq feet) - 1,000

LEGS:

Number..... - 3
 Length overall (including pad).....(feet) - 72'
 Diameter(inches) - 24"
 Wall thickness(inches) - 3/8"

PONTOONS:

Length overall(feet) - 20'
 Width overall(feet) - 7'
 Depth overall(feet) - 2'

ELEVATING:

Maximum leg extension, bottom
 of hull to bottom of pad(feet)- 60'
 Maximum working water depth .(feet) - 45'
 Recommended air gap allow(feet) - 6'
 Maximum sea conditions(feet) - 6'
 Speed elevating(feet/minute) - 16

NAVIGATIONAL EQUIPMENT:

VHF Radios, Radar, Compass & GPS (* Company
 Radio and/or Satellite phone can be installed.)

PROPULSION:

Main engines (twin screw)6-71 Detroit
 Rated horsepower per engine180 hp
 Reduction gears Twin Disc MG509 ratio - 2:1
 Speed underway (approx.)(knots) - 8
 Fuel usage at maximum RPM
 (gallons/hour/engine).....- 8

GENERATORS:

Number - 1
 Engine - Isuzu 4BG1
 Generator - Lima 30 KW
 Fuel usage.....(gallons/hour) - 2.25

CAPACITIES:

Fuel(gallons) -1,200
 Potable water(gallons) - 800
 Deck Load Capacity.....- 60,000 lbs.

LIVING QUARTERS:

Berths for boat crew - 2
 Berths for work crew - 4
 Personal Lockers - 8
 Shower(s) - 1
 Lavatory(s) - 1
 Commode(s) - 1
 Refrigerator - 1
 Stove w/Oven - 1
 Sink - 2
 Television w/ DVD & Digital Antenna..... - 1
 Microwave - 1

DECK EQUIPMENT:

Crane - 10 ton w\60 ft boom